



BioGraph Infiniti Continance Online Course

is designed for beginner users of Infiniti systems with the Continance screens and scripts of the **Rehabilitation Suite**. Its goal is to meet the training needs from clinicians, researchers and other health professionals who want to learn how to use the latest biofeedback technology for incontinence. This course will be focusing on EMG monitoring and training for pelvic floor muscle. This online course introduces the user to the functionality, power and versatility that the Infiniti platform has to offer.

All online courses are accredited by BCIA to fulfill the continuing education requirements for recertification.

Online Course Benefits

- No travel expense- learn from the comfort of your own home or office.
- All courses are limited to a maximum of 3 participants to ensure individual attention.
- Rotating monthly courses allow for greater flexibility with your schedule.
- The participants will get the benefit of a “hands-on” learning experience of this powerful physiological tool.
- The online course has a total of 6-hours of instruction given over the internet. The six hours are divided into four 1.5-hour lessons given twice a week for two weeks.

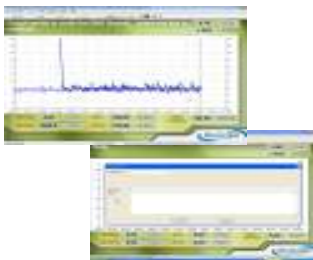
COURSE OBJECTIVES

Objectives are set at the beginning of the course with the instructor and with the goal to meet the objective before the end of the Course. The goal of this course is to make beginners feel comfortable using the BioGraph Infiniti software and Continance screens and scripts of the Rehab Suite with their hardware, and to offer advanced users an overview of the full clinical potential of their systems. Participants will learn to recognize the important components of their hardware and characteristics of their software. They will also be able to identify various hardware accessories and software suite items, and understand how to properly engage them for effective session use.

LEARNER OUTCOMES

At the end of this 6-hour course participants :

- Will have acquired a good understanding of their equipment and suite software.
- Will be able to identify and briefly describe the measurements generally used in Incontinence treatment.
- Can explain what a virtual data-channel is and how it is related to the raw data from the physical sensor.
- Can define what is artifact and why is artifact rejection necessary.



Lesson 1: Learn how to Start a Session & use Scripts (Protocols)

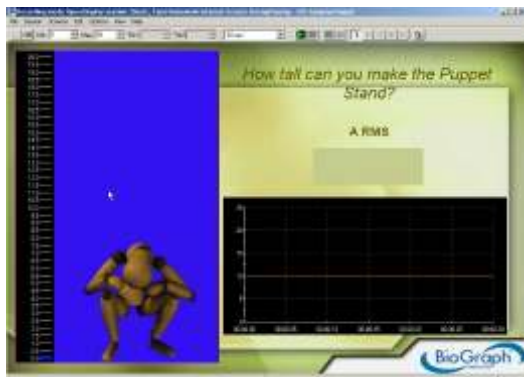
A Script is a pre-defined configuration of screens and statistics with a functional activity. An extensive set of scripts geared to the treatment of incontinence. The suite provides work-rest or continuous exercise protocols containing templates of varying degrees of difficulty. These protocols are a quick and easy way to evaluate your patients. This allows you to build training programs suited to your patient's individual needs. You will learn how to open, edit, record and run a session.

Lesson 2: Working with Open Session Screen Displays

Open sessions are designed with rewards being provided to patients in the directional change in which you would like to reward; directional being strength /relaxation training or fine motor movement. You will learn how to use the unique feature of this software by choosing up to 5 different screens per patient session without having to exit programs. You will learn how to use and manipulate the Strengthening, Relaxation, Training, and Assessment/Review screen categories.



Lessons 3 and 4: Review and Analyze Data specific to Continance and Customize your Reports



You will learn how to modify your screen and data settings. In client options, you may edit, add, delete, import/export, and archive. In session options, you can add session notes, import/export, replay and choose methods of reviewing and more. You will gain confidence in learning how to use the “Stim” features for the software. You will review and analyze the data in recorded sessions. BioGraph Infiniti software has the unique feature of providing you with more powerful information than what is found on most diagnostic equipment. You will learn how to use and modify the trend reports ; easily edited reports provide valuable information for third party payers and patient files. Editing features include artifact rejection, statistics on all or part of session with the ability to save for clinical reports, and customizing documents.

This course is intended for licensed health professionals and those participants seeking BCIA certification if they are not already certified. As this online course is a “hands-on” learning experience, you are required to use your equipment online including computer with software, encoder and sensors. Also required are: High speed internet, Skype™ and GoToMeeting software and user ID, headset and microphone.

INSTRUCTORS:

The following is a list of the outstanding presenters who instruct the online courses and will guide you to a better understanding of your instrumentation:

Nancy Schully, BA, BCIA. Nancy Schully is founder and President of Southern Biofeedback Corporation, which is a leading distributor of biofeedback instrumentation and educational seminars for the treatment of pelvic muscle dysfunction. She provides consultation services for instrumentation sales and in-service instrumentation training to clinics, institutions and private practitioners throughout the nation. She has over 20 years of clinical and instrumentation experience in biofeedback applications and behavioral interventions.

Pedro Teixeira. Pedro Teixeira is a Licensed Physical Therapist (Licenciado em Fisioterapia) in Oporto, Portugal. Pedro is the Biofeedback Foundation of Europe Project Manager for International Research & Education Projects that focus on surface Electromyography. Pedro is the co-author of an 80-hour Post Graduate Course entitled "Introduction to Surface Electromyography". In addition to completing a first year towards a Masters Degree in Science of Physical Therapy at the Technical University of Lisbon, Pedro has successfully completed European continuing medical education courses on movement dysfunctions and biofeedback. Pedro then worked in rehabilitation and sports with the Portuguese National Team in Basketball, and in other high level sports teams in Rugby, Tennis, and Surfing. For the last four years Pedro's clinical work has focused on pain management and rehabilitation using surface electromyography and other physiological signals that provide information on psychosomatic symptoms. Pedro instructs BFE online courses on Surface Electromyography in English and Portuguese.

FOR MORE INFORMATION OR TO REGISTER VIA TELEPHONE:

Workshop Coordinator
Thought Technology Ltd.
2180 Belgrave Avenue
Montreal, QC, Canada H4A 2L8

Tel: 1-800-361-3651 ext. 135
Tel: (514) 489-8251 ext. 135 Fax: (514) 489-8255
E-mail: workshops@thoughttechnology.com
Internet: www.thoughttechnology.com/intro.htm

CANCELLATION POLICY: Cancellations must be received in writing if requested **prior to 1 week before the course** date. You will receive credit towards a future course minus an administration fee of US\$ 50. Cancellations after this date forfeit registration fee. Thought Technology Ltd. reserves the right to cancel the course with full refund.